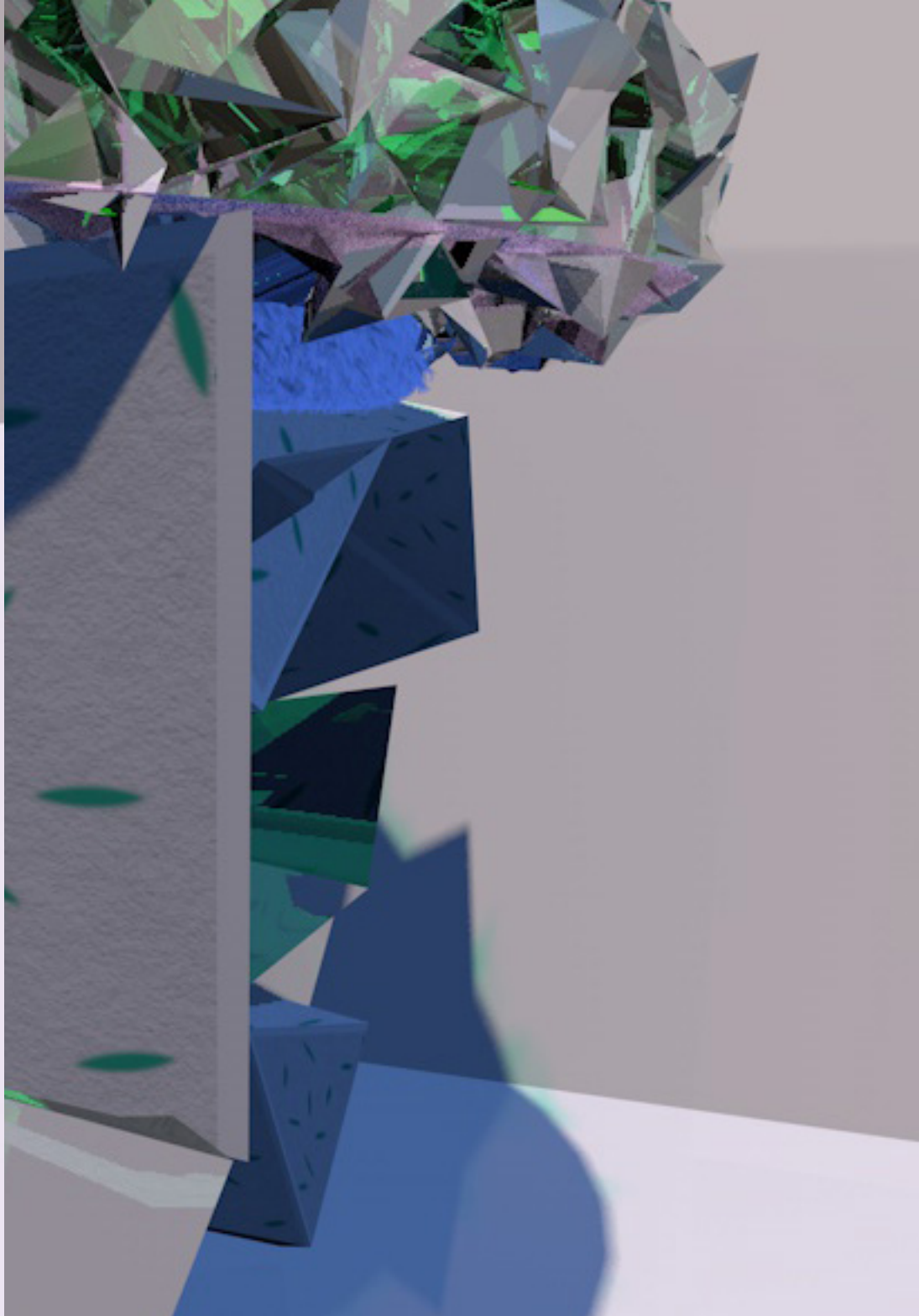
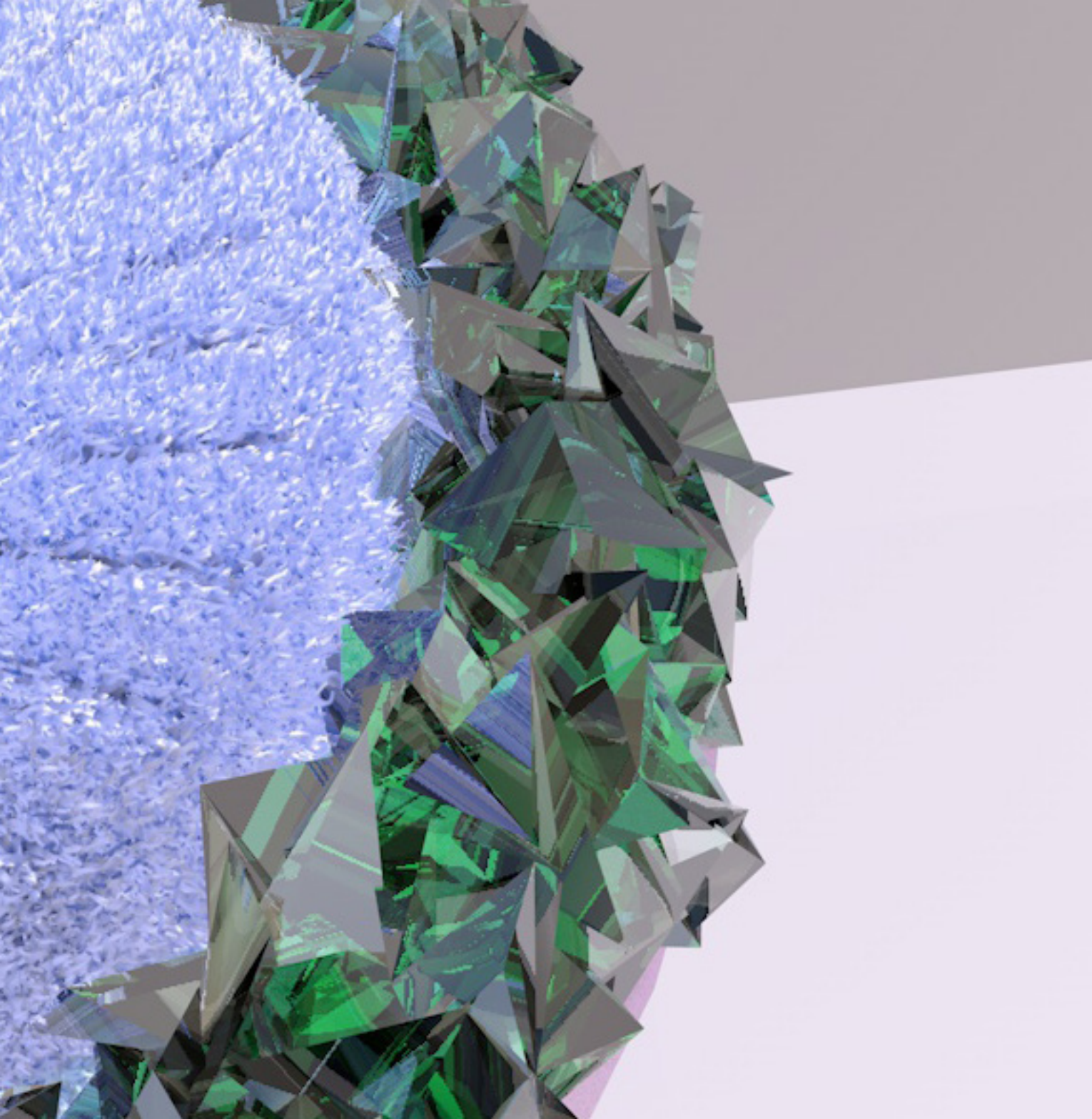


MAE

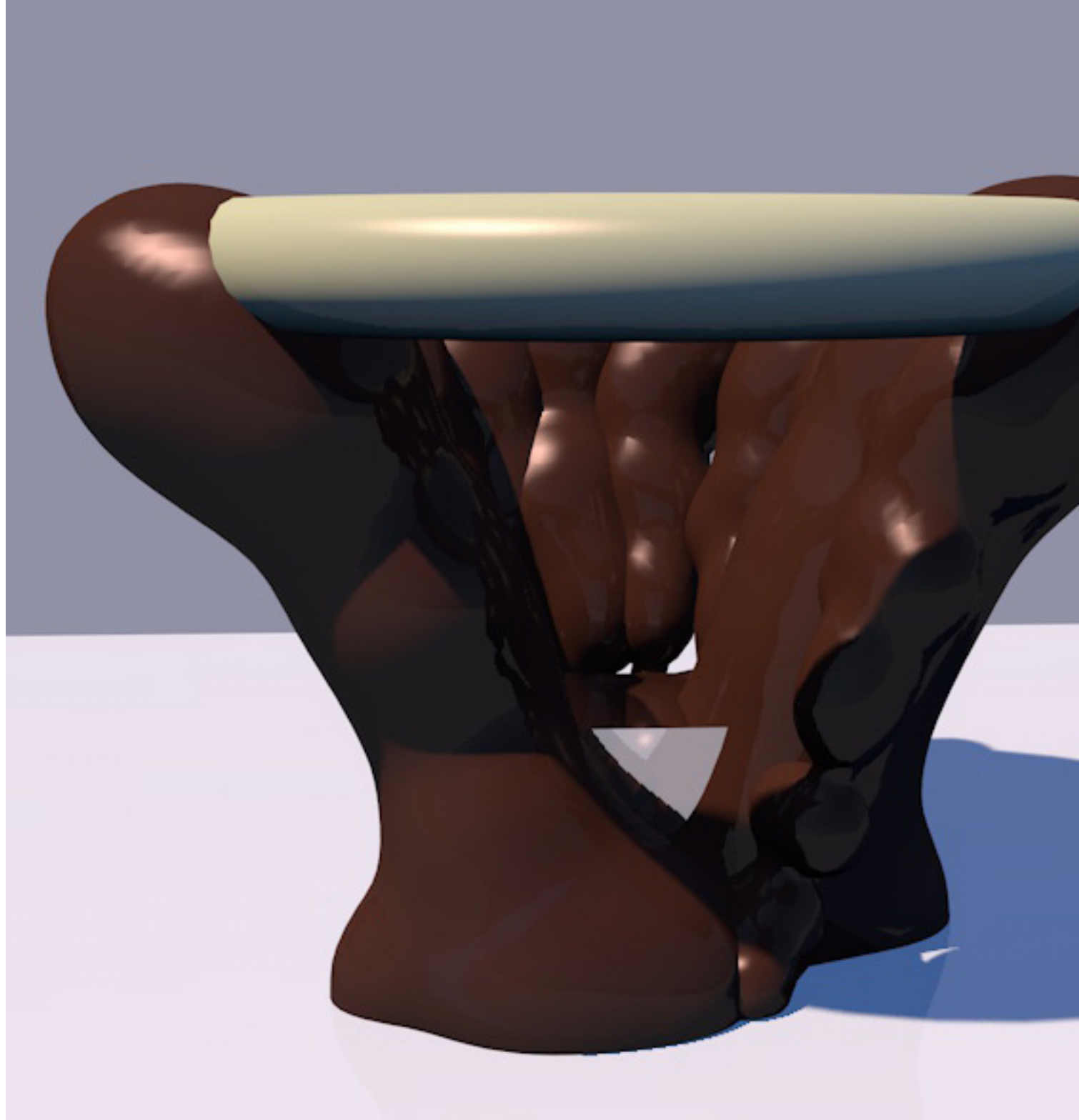
Mae is a ceramicist from Peckham. Her craft involves introducing unconventional materials in her pottery. The chair is inspired by this contrast in textures with a plush centre for your virtual self and a sharp glass rim since you won't feel anything.

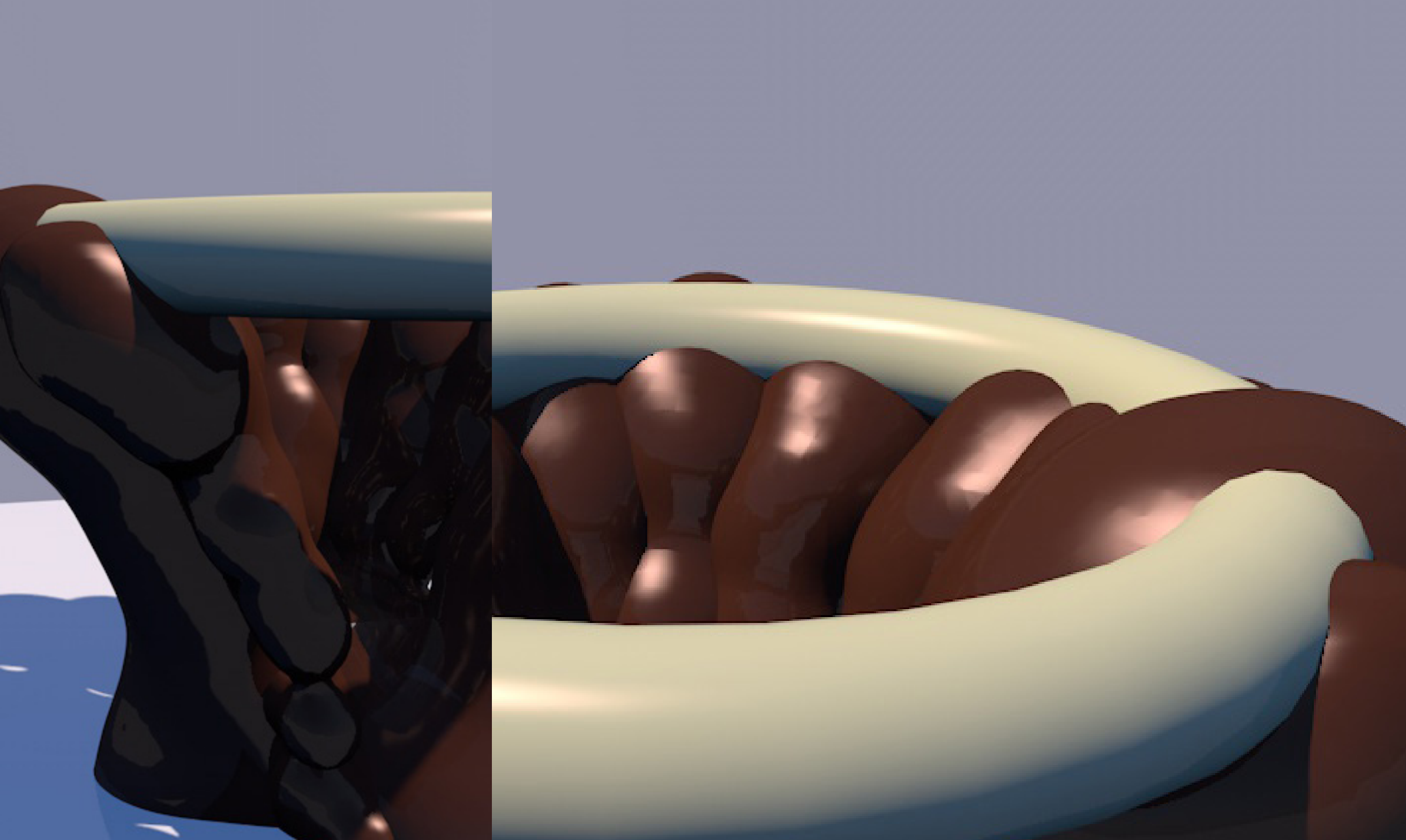


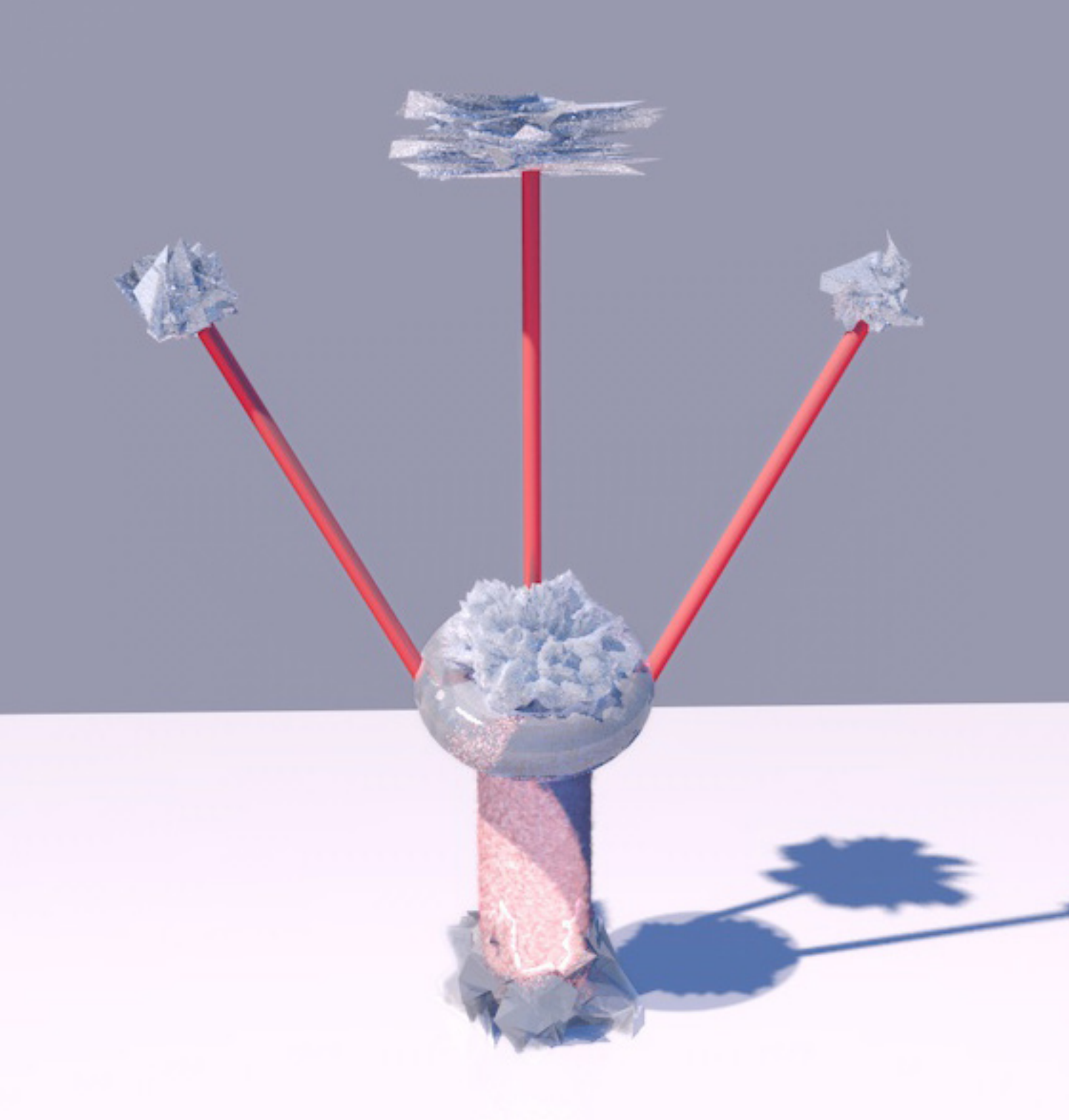
PAUL

Paul is a chocolatier from the north-west of the UK. He creates distinctive flavour by using unusual combinations. Chocolate exists in liquid and solid states and so does this chair. Ever wanted to sit in a hot chocolate?

It is now possible.

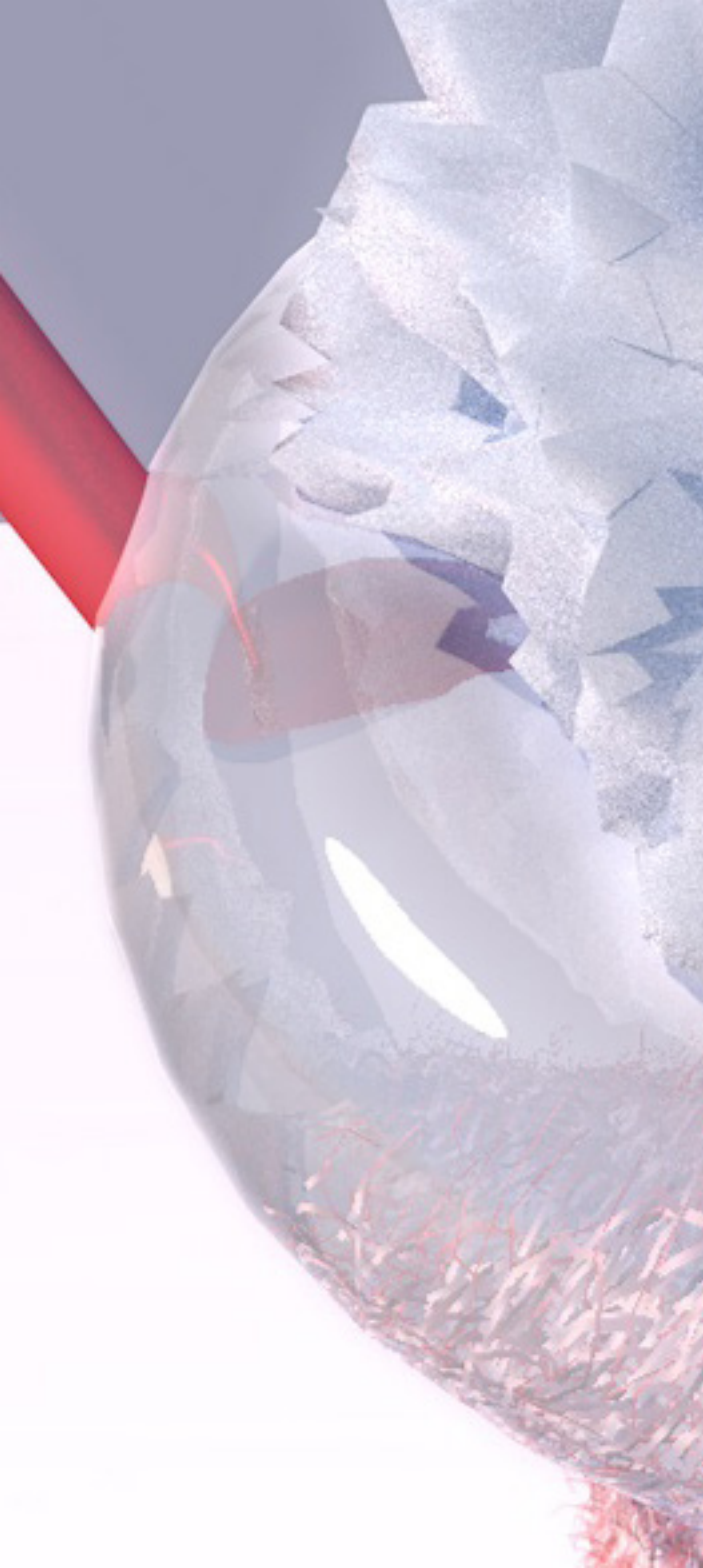






BETH

Fine artist Beth's work is highly personal. She manipulates textures in ways they naturally will not occur in reference to her existence. The chair is inspired by mixing unrealistic textures and shapes with a muted colour pallet.



REBEKAH

Rebekah is an embroiderer who uses her skills as a form of expression. The colours and textures were chosen as a representation of her practice, each a different tool in an embroiderers kit. An awkward sit this is a chair you will not forget in a hurry.

